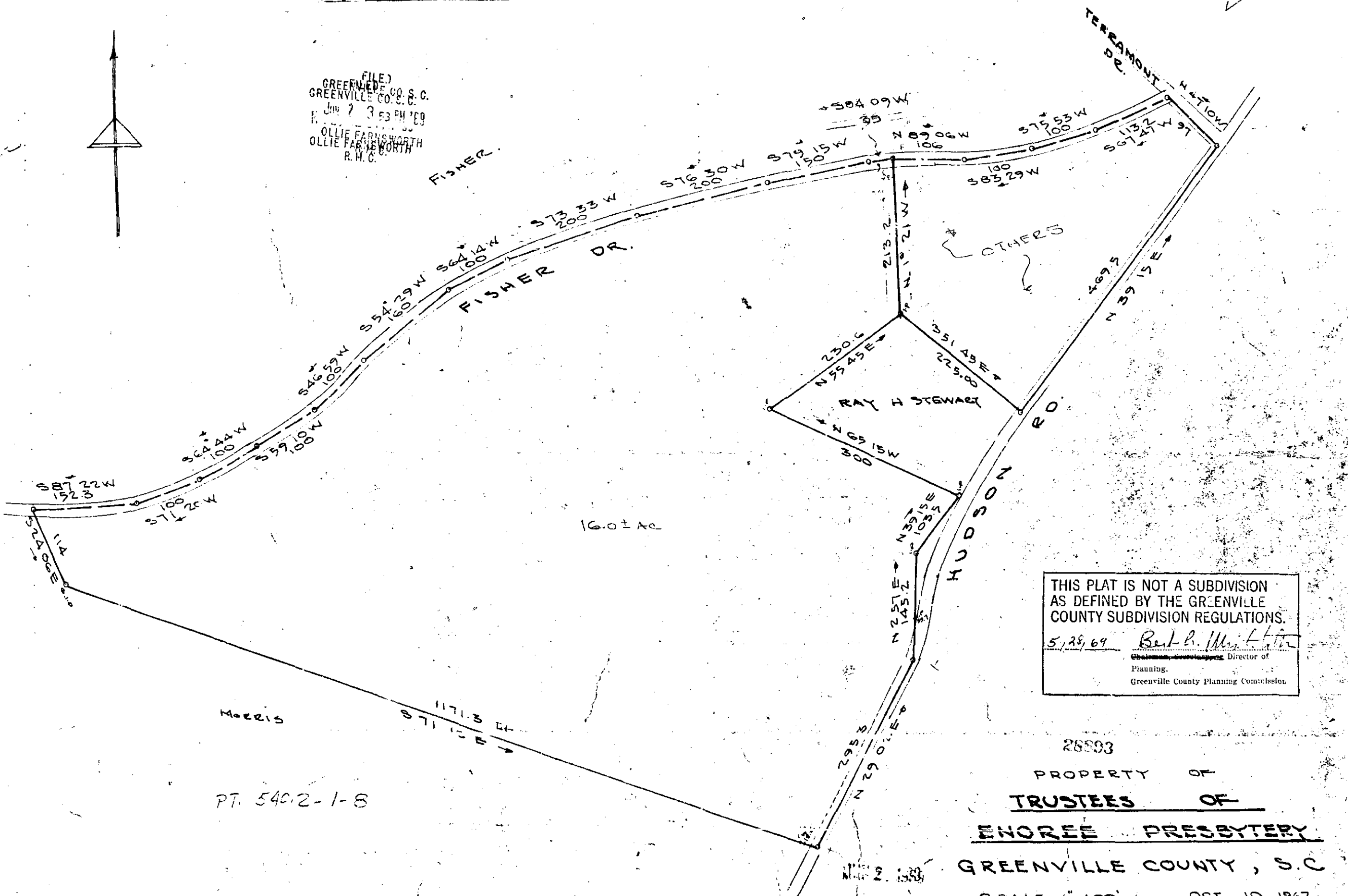
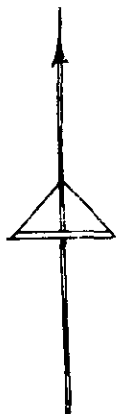


28993 Filed This 2 day of June 1962
 And Recorded in Vol. 77, Page 77 at 3:53 P.M.
 Ollie Farnsworth
 Register Mesne Conveyance Greenville County, S. C.

Plat Book-UUU-Page 77

FILED
 GREENVILLE CO. S. C.
 JUN 7 3 53 PM '62
 OLLIE FARNSWORTH
 R. H. C.



THIS PLAT IS NOT A SUBDIVISION
 AS DEFINED BY THE GREENVILLE
 COUNTY SUBDIVISION REGULATIONS.
 5/28/69 Ben L. Miller
 Chairman, Greenville County Planning Commission
 Director of
 Planning.
 Greenville County Planning Commission

28993
 PROPERTY OF
 TRUSTEES OF
 ENOREE PRESBYTERY
 GREENVILLE COUNTY, S. C.

SCALE 1" = 100' OCT 10 1967
 REV. MAR 1969